



Times of Shrewsbury



December 2022

SHREWSBURY'S WILDLIFE ROAD CROSSING PROJECT

Would you like to learn more about the wildlife in our town and how to identify what animals made those tracks in your yard? Then we have the perfect project for you to join—the Wildlife Road Crossing Project. The Shrewsbury Conservation Commission initiated the Wildlife Road Crossing Project to identify wildlife road crossings in our town and to learn about the number and variety of animals whose travel corridors intersect our roadways.

Roadways and bridges need to be designed with wildlife connectivity needs in mind. Our project will help identify where wildlife corridors are as well as help landowners become aware and understand the importance of conserving forested land on each side of the roadway. It will also help to know wildlife movement in order to plan for future culverts and bridges.

This is a three-year project, and It will be interesting to see if our work, this first year, starts to define wildlife connectivity and movement between conserved lands in Shrewsbury. At the end of each winter season Jens Hilke, Vermont Fish and Wildlife, will take our sightings data and make a Master Map which will update and refine wildlife corridors in Shrewsbury.

We will go out in teams. Beginner trackers will have the chance to learn from more experienced trackers. If you have not yet been trained, we will help you learn to identify tracks for the project!

What you would need to do:

- After a multi-inch snowfall, we will email you about going out to look for tracks on your road section. Ideally if we could do each section five times this winter, that would be perfect! Snowfall will have to cooperate! Sections vary in length, but are less than a mile long.
- Measure the tracks you find and record the species on a field-sheet. When you get home, you will need to transfer your data to an info sheet and email it to me!
- We need to get a longitude and latitude (Long/Lat) location of the track. This is how we place the track precisely on a GIS (Geographical Information System) map. If you have an iPhone or Android phone there are inexpensive apps that you can get (about \$10 onetime fee) to measure Long/Lat. A handheld GPS also works. Google Maps, which comes on most phones, has a pin function that does longitude and latitude also. If you don't have a way to record Long/Lat, we will partner you with someone who can!
- I plan to go out with you initially and will join teams as much as I can throughout the winter! In between snowstorms, I plan to do fun/training walks to look at wildlife tracks! Also, if Covid cooperates, we can plan some potlucks to see how everyone is doing on their sections.

Do you want to sign up? We had lots of fun getting together for wildlife tracking walks last year. I hope you'll consider joining our Wildlife Road Crossing Project this winter. You may even start looking forward to fresh snow falls!

To help with the Wildlife Road Crossing Project, send me your name and area of town, and I will match you to a team and section so you can help with our Wildlife Road Crossing Project!

~Article by Linda Shelvey

Lpurdyschel@gmail.com



Shrewsbury Conservation Commission

Trail Camera Picture of the month

This month we have trail camera captures of a large Bobcat traveling on a stonewall and a posing Gray Fox. This is a nice look at the unique markings of the fox! The tracks of the Bobcat and Gray Fox are very similar. Both are round, have 4 toes and are close in size.



The Gray Fox track is symmetrical. If folded in half, both sides would be the same. An X can be drawn between the toes and heel pad. You can

also see faint claw marks above the two leading toes. The Gray Fox has semi-retractable claws and can climb trees!



The Bobcat track is asymmetric, one toe leads. An X can't be drawn between the toes and heel pad. Usually, the cat keeps its claws retracted...and there are even more differences between canine and feline tracks!

Do you have a wildlife picture to share? A track for us to identify? Send your trail cam, phone or camera picture to Linda Shelvey at Lpurdyschel@gmail.com. Please include your location in your email, so we can include your data on our Shrewsbury Wildlife Sightings Map.

Happy Tracking!



No January 2020 Issue It's Vacation Time!

The editors take a "vacation" so there is no January issue, but we'll be back with a February 2020 issue. Happy Holidays! ~Chryl Martin, Vicki Arthur, & Rich Biziak

Shrewsbury Conservation Commission Meetings

The Shrewsbury Conservation Commission will not meet in December 2022 or January 2023. ~Submitted by Louise Duda

Town Administrative Assistant

The Shrewsbury Selectboard is looking for a Town Administrative Assistant who will:

- Attend all Selectboard meetings, take minutes, and follow up on Selectboard business.
- Maintain Selectboard files in coordination with the Town Clerk, Treasurer, and other Town Staff.
- Maintain and enhance the Town's website.
- Assist the Road Commissioner with grant applications.

This is a part-time, hourly position.
A more detailed description is available.

If Interested please contact:
Aaron Korzun 492-3362
dockorzun@vermontel.net

Donation Time!

The Times is mailed to all residents of Shrewsbury and is also available online on the Shrewsbury Historical Society website:

<http://www.shrewsburyhistoricalsociety.com>

The cost of printing and mailing is made possible through advertising and your donations. Donors are recognized for the remainder of the calendar year in which their donation is received. You determine the amount--any and all donations are appreciated! ~The Editors

Calling All Photographers

The Shrewsbury Board of Auditors is soliciting photographs of Shrewsbury life during the current year for the town's 2022 Annual Report.

If you would like your photograph to be part of the historical record of our town, please submit your picture to the Board of Auditors for consideration.



Pictures of our town should be in one of the following categories: Historic Town Buildings, Landscape and Environment, Agriculture, Town and Town Organization Events, Town Officers, and Kid's Events.

Submit your picture as a jpeg file and email it no later than January 1, 2023 to auditshrewsbury@gmail.com. Don't forget to provide captions identifying people, places, and events. Also, be sure to identify the photographer so we can give proper credit! The Board of Auditors will review the photos and select them based on applicability and space availability. Thank you for your help with our Town Report!
Shrewsbury Board of Auditors

The Times of Shrewsbury

The *Times of Shrewsbury* is published monthly from February through December, and compiled by volunteers from material submitted by residents with the goal of informing townspeople of what is happening in Shrewsbury. The views and opinions expressed in articles are solely those of the author and not necessarily those of the editors.

All submissions must be accompanied by the name of the submitting person and are printed at the editors' discretion subject to editing for length and clarity. Letters to the Editor exceeding 350 words will be subject to editing for length. Any information piece or informational political letters (without specific party or vote appeal) will be subject to the guidelines previously described.

A writer of a letter that names a Shrewsbury resident or organization in a critical manner must get copies to the resident or organization, and to the *Times* by the 10th of the month prior to publication or it will not run. If the named person or organization indicates in writing to the writer and to the *Times* that they choose not to respond, the letter will run. If the named entity responds, the response and initial letter will run in the same issue.

There is no charge for: jokes, poems, nature reports, family event announcements, or feature articles or letters that are not commercial.

Articles and Advertisements: Deadline for submission is 5pm on the 20th of the month prior to publication; exceptions will be announced in the prior month's *Times*.

Ads in the *Times* are for area businesses, local non-profit events, and local ballot election advertisements.

Best Formats: Articles: Word or as an email message with no formatting. Photos: jpeg. Ads: jpeg or Word document.

Monthly advertising fees and relative sizes:

Full page	\$90	(7.5"w x 9.5"h)
Half page	\$50	(7.5"w x 4.5" h or 3.5"w x 9.5"h)
Quarter page	\$10	(7.5"w x 2.5" h; or, 3.5"wx 4.5"h)
Business card	\$5	(3.5"w x 2"h)
Classified ad	\$3	(15 words or less)

Payment due by the 20th of the month prior to publication.

Chryl Martin ~ Rich Biziak ~ Victoria Arthur
Times of Shrewsbury, P. O. Box 373, Cuttingsville, VT 05738
Email: shrewsburytimes@gmail.com Online: <http://www.shrewsburyhistoricalsociety.com>

SHREWSBURY COMMUNITY CALENDAR

Nov 27		*Science Book Club postponed until January 22
Dec 9	4-6pm	*Wine tasting at Pierce's Store
Dec 9	6:30pm	*Kids Holiday Movie Night at the Library
Dec 10	7pm	*Community Music Jam at SAGE
Dec 11	3:30pm	*Writer's Group at the Library
Dec 18	3-5pm	*Singers of all ages join together at the Meeting House for Holiday sing-a-long
Dec 18		*Famous Books Book Club postponed until January 15
Jan 14	7pm	*Community Music Jam at SAGE
Jan 15	4pm	*Famous Books Book Club at the Library
Jan 22	4pm	*Science Book Club at the Library
Jan 27	5pm	*Petitions due to Town Clerk to stand for elected Town offices on March 2023 ballot
Feb 5	10-12noon	* Guided Walking or Snowshoeing tour of the Stewart Maple operation sponsored by SCC

*see elsewhere in newsletter for details

TIMES OF SHREWSBURY
online at
www.shrewsburyhistoricalsociety.com



Deadline for submission to *Times of Shrewsbury* is by 5:00pm on the 20th of each month.

REGULAR MEETINGS and EVENTS

Board of Selectman Meeting	1 st & 3 rd Wednesdays – 6:30pm at Town Office
Bone Builders	Tuesdays & Thursdays – 10am at Meeting House
Development Review Board	4 th Wed -7pm at Town Office; check town website for agenda
Library Trustees Meeting	2 nd Tuesday – 7pm at Shrewsbury Library
Mill River Unified Union School Board Mtg	1 st Wed 7pm @ MRHS & 3 rd Wed. 7pm location TBA
Planning Commission	2n & 4th Tuesdays 7pm at Town Office
Religious Society of Friends (Quakers)	Sundays – 10am via Zoom; contact wildernessfriends@gmail.com
Shrewsbury Community Church	Sundays – 10:30am - Worship service and Kids Funday Program
Shrewsbury Conservation Commission	No meeting December 2022 or January 2023
Shrewsbury Historical Society	Next meeting, May, 2023 in the Museum
Shrewsbury Historical Society Museum	Opens first Sunday in July, 2023 from 1 to 3pm
Shrewsbury Singers	Currently taking a break
Shrewsbury Sno-Birds	2 nd Tuesday – 7pm at Southside Steakhouse in Rutland
Shrewsbury Volunteer Fire Department	Thursdays – 7pm at the Cuttingsville Station

Shrewsbury Town Website: www.shrewsburyvt.org

Clerk's Office	492-3511 Mon – Thurs 9am – 3pm; Closed Friday
Town Garage	492-3656 (Follow prompts to report roadway blockage on non-work days)
Listers	492-2009 available by appointment
Treasurer's Office	492-3558 Monday 9am-11am
Transfer Station	Sunday 8am-4pm ~ Wednesdays 12noon-6pm
Library	492-3410 Hours: Mon 10am-12noon; Tues 7-9pm; Wed 10am-5pm & 7-9pm; Thurs 7-9pm; Fri 10-12noon; Sat 10am-12noon
Meeting House	492-6050 Reservations: 492-3361 or julanne@vermontel.net
News Flash Email:	vtbenbeano@gmail.com or benbeano@vermontel.net [Urgent and reminder news info]

Cuttingsville Post Office 492-3585 Window Hours Mon-Fri 7:30am-10:30am & 11:30am-2:30pm; Sat 8am-11am.

Lobby Hours Mon-Fri 7:00am-7:00pm and Sat 7:00am-4pm

Burn Permit: Forest Fire Warden Kevin Brown	802-345-8668 or, Deputy Fire Warden Al Ridlon, Jr.	802-282-3642
Animal Control Officer: Vacant (Contact a Selectboard member)	1 st Constable: TBA	Game Warden: Tim Carey 793-2776
Emergency Management Aaron Korzun	492-3362	Green Mountain Power outage 1-800-451-2877
Medical-Police-Fire Emergency Dial 911	Ambulance 773-1700	Rutland Hospital 775-7111

[Updated 10/17/22]

SHREWSBURY SELECTBOARD MINUTES

The Selectboard meets the 1st and 3rd Wednesday at 7pm at the Town Office.

November 2, 2022: Minutes of Selectboard Meeting

Present at meeting: Selectboard members: Aaron Korzun, Francis Wyatt, Steven Nicholson. Planning Commission: Laura Black. Road Commissioner: Jamie Carrara

Members of the Public: Virginia Gundersen, Dave Tibbs

The meeting was convened at 6:30 PM

Agenda: Motion made by A. Korzun to follow the agenda. F. Wyatt seconded. All in favor, motion approved.

Website Update Development: Laura Black discussed details regarding the Town website. Who should have access for posting? Laura will proceed with getting at least 2 quotes for website development and maintenance.

ARPA Funds: Didn't qualify for the diesel generator grant for the Town Garage.

Is there a hand-held 2-way radio service that wouldn't require the repeater?

New Business: Virginia Gundersen had concerns about the transfer station. Virginia would like a better sign with more information about what to do with cardboard currently, until we find a solution for the broken cardboard compacter. People can take cardboard to Hubbard's.

The Selectboard is OK with the Rutland County Chapter of Vermont Covered Bridge Society putting up a wreath on the Brown Bridge from December 3 to January 21.

We need to consider our options for Listers, since we may not have any Listers come March.

Road Crew Positions: Interviewed some applicants. None have CDLs.

Executive Session: Aaron Korzun made a motion to go into an executive session at 7:50 PM for a personnel matter. F. Wyatt seconded. Approved. Ended Executive Session at 8:05 PM.

Aaron Korzun made a motion to hire Robert Poro for the road crew position. F. Wyatt seconded. Approved.

Review Minutes: A. Korzun made a motion to accept the 10/19/2022 Selectboard meeting minutes with the following topic correction: "The Class 4 Roads Committee Report: Louise Duda presented the Class 4 Road Study done by the group made up of Planning Commission members, SCC members, and a town resident after all Class 4 roads were visited and information collected on the status of each road. This was followed by a discussion on issues related to Class 4 roads facing towns across the state. The group will come back for further discussion in April after the SB and Road Commissioner have had time to study the maps and information provided." Seconded by F. Wyatt. Approved.

Clarification to 9/21/22 minutes: Transfer Station Attendants will be paid weekly.

Review Orders: F. Wyatt made a motion to approve Selectboard Orders #11 for \$13,265.09 and Road Orders #11 for \$5,969.55. Seconded by A. Korzun. Approved. Adjourned at 9:07 PM

Respectfully submitted, Francis Wyatt

These minutes are unofficial until approved by the Selectboard at the next regularly scheduled meeting

November 16, 2022: Minutes of Selectboard Meeting

Present at meeting: Selectboard members: Aaron Korzun, Francis Wyatt, Steven Nicholson. Planning Commission: Laura Black, Melissa Reichert, Ryan Fitzbeauchamp.

Members of the Public: Jonathan Gibson, Todd Fillmore

The meeting was convened at 6:05 PM

Agenda: Motion made by A. Korzun to follow the agenda. S. Nicholson seconded. All in favor, motion approved.

Public Hearing-Flood Hazard and River Corridor Regulations: Laura Black noted that the Flood Hazard Regulations needs a cover page with a place for the adoption date. The SPC will prepare a final copy with a cover page. Laura summarized the differences between the new proposed and existing regs.

Adoption of Proposed Flood Hazard and River Corridor Regulations: A. Korzun made a motion to adopt the 2022 Proposed Flood Hazard and River Corridor Regulations, S. Nicholson seconded. Approved.

Public Hearing-Unified Zoning and Subdivision Regulations: Laura Black summarized the proposed amendments to the existing regs. Jonathan Gibson and S. Nicholson submitted some comments.

Adoption of Proposed Unified Zoning and Subdivision Regulations: A. Korzun made a motion to adopt the 2022 Proposed amendments to the Unified Zoning and Subdivision Regulations. F. Wyatt seconded. Approved.

Website: Laura Black presented 3 proposals for website development and annual maintenance. The Selectboard directed Laura to proceed with one of the local developers to initiate a website development plan with detailed annual costs and an hourly rate for services, and to continue to gather input from town organizations and officials.

Lincoln Hill Speeding: Todd Fillmore says that there is still a problem with speeding by his house. We discussed various options for dealing with the problem, including placing the speed feedback trailer there and more concentrated policing.

Appointments- Rutland Emergency Management Committee: F. Wyatt made a motion to appoint Aaron Korzun as the Emergency Management Representative and Jack Perry as the Emergency Services Representative for the Rutland Emergency Management Committee. S. Nicholson seconded. Approved.

ARPA Funds: Nothing new to report.

New Business: The Town is getting a combination cardboard and plastic compacter to replace the old cardboard compacter.

Review Minutes: A. Korzun made a motion to accept the 11/2/2022 Selectboard meeting minutes. Seconded by S. Nicholson. Approved.

SHREWSBURY SELECTBOARD MINUTES

**Continued)*

Review Orders: F. Wyatt made a motion to approve Selectboard Orders #11a for \$17,001.68 and Road Orders #11a for \$17,991.27 and corrected Orders 10a to \$20,996.53. Seconded by S. Nicholson. Approved.
Adjourned at 9:25 PM

Respectfully submitted, Francis Wyatt

These minutes are unofficial until approved by the Selectboard at the next regularly scheduled meeting.

Editor's Note: The minutes have been edited for brevity but not content. For complete minutes, go to the Town website www.shrewsburyvt.org

MESSAGE FROM MONTPELIER

Thank You! I am so grateful and honored for the opportunity to continue to represent you in Montpelier.

The new legislative session begins January 4. This marks my third term in Montpelier. Phil Scott was re-elected Governor with broad support across the state, but Vermonters also elected 104 Democrats to the House of Representatives, as well as 5 Progressives and 2 Independents who tend to vote with the Democrats on most issues, giving us a roughly 111 vote veto-proof majority for the next session. This significantly changes the power dynamic in Montpelier from last session and I am excited for all that we will be able to accomplish for Vermonters.

My priorities this session are similar to those I ran on in 2018 and have held throughout my time in office, although fatherhood may have shifted their order. My top issue and goal for this session is healthcare. I continue to question the "All-Payer Model" that we have been investing so much money into and not seeing any actual benefits from, and would like to see us move towards guaranteed healthcare for all Vermonters. Drug policy reform is next on my list and inextricably linked to our healthcare efforts. Too often we see people arrested for drug possession and released within weeks or months still suffering from addiction. I intend to continue to fight to change that model. What we are doing isn't working and we need to do something different, my proposal is to get them out of our correctional facilities and into treatment programs to end the cycle.

I also have a handful of other issues that I have taken on over the past four years that I will continue to work on and lobby for. I will be introducing bills to allow happy hour drink specials in Vermont again, allowing third party vendors like "Instacart" or "Uber" to deliver alcohol, embedding workforce development specialists within our Recovery Centers, and creating a voluntary pension system for volunteer firefighters. As always I would love to hear from you on these or any other issues, call or text me anytime. Please DO NOT email. And thank you again for continuing to put your trust in me,

*Logan Nicoll, State Representative
(Ludlow, Mount Holly, Shrewsbury)*

Thank you to my Shrewsbury friends!

Thank you for your votes on Election Day! I look forward to serving on the Board of Civil Authority for our fabulous town!

~Submitted by Taffy Maynard

Annual Town Meeting Tuesday - March 7, 2023

There are a number of Town Officer positions that will become vacant in 2023, both elected and appointed positions. Most Boards and Commission vacancies are filled by an appointment of the Selectboard (Planning Commission, Development Review Board, Conservation Commission). If you have interest in serving on one of the Boards or Commissions speak to the Chairperson of that Board about your interest.

For those interested in standing for an elected local office.

- Petitions signed by 1% of Shrewsbury registered voters (Ten (10) Names) are due to the Town Clerk with consent forms by 5:00pm January 27, 2023 for a name to appear on the ballot. Petitions and consent forms may be obtained online from the Secretary of State's website or from the Town Clerk.

The following local offices will be elected on the March 7, 2023 Annual Town Meeting Ballot:

- Town Moderator (1 - Year Term)
- Selectboard (1 - Three Year Term)
- Selectboard (1 - Two Years of Three Year Term)
- Auditor (1 - Three Year Term)
- Lister (1 - Three Year Term)
- Lister (1 - Two Years of Three Year Term)
- 1st Constable (1 One Year Term)
- 2nd Constable (1 One Year Term)
- Cemetery Commissioner (1 - Three Year Term)

Annual Town Meeting

Tuesday - March 7, 2023

Polls Open 10:00am - Close 7:00pm

Stay tuned for more information on the Town Meeting Election and Shrewsbury Informational Meeting to appear in the February. ~Megan LaChance, Shrewsbury Town Clerk

Open Town Positions

Town residents have the opportunity to affect life in Shrewsbury. Serving on a town committee is just one of the ways to do that. There are volunteer positions as well as elected positions. Please consider any of the open positions which we will publish from time to time.

Name of the position: Planning Commissioner.

Duties/ description of the job: The Planning Commission meets twice per month on the second and fourth Tuesdays at 7:00 PM. Members are expected to become familiar with the Shrewsbury Town Plan, the Unified Zoning & Subdivision Regulations and other Town Bylaws and Ordinances. Members will also become familiar with Vermont State Statutes and other rules that regulate and protect Vermont lands while allowing for coordinated development.

Background needed: Candidates should have an interest in long-range town planning, which includes development and maintenance of the Town Plan and the land use regulations. For more information contact Laura Black, Chair, at: lblack@vermontel.net or 802-770-2084 and/or any Planning Commissioner.

ELECTION RESULTS
2022 GENERAL ELECTION RESULTS
 586 Votes Counted / 62% of eligible voters

US Senator (1)

MARK COESTER	2
NATASHA DIAMONDSTONE-KOHOUT	10
STEPHEN DUKE	0
DAWN MARIE ELLIS	2
MS. CRIS ERICSON	5
GERALD MALLOY	219
KERRY PATRICK RAHEB	5
PETER WELCH	329
TOTAL WRITE IN	2
OVERVOTE	0
BLANK	12
TOTAL VOTES	586

State Treasurer (1)

H. BROOKE PAIGE	231
MIKE PIECIAK	329
TOTAL WRITE IN	0
OVERVOTE	0
BLANK	26
TOTAL VOTES	586

State Representative (1)

LOGAN NICOLL	419
TOTAL WRITE IN	17
OVERVOTE	0
BLANK	150
TOTAL VOTES	586

Prop 2 (Slavery Prohibition)

YES	468
NO	80
OVERVOTE	0
BLANK	38
TOTAL VOTES	586

Secretary of State (1)

SARAH COPELAND HANZAS	309
H. BROOKE PAIGE	238
TOTAL WRITE IN	0
OVERVOTE	0
BLANK	39
TOTAL VOTES	586

Probate Judge (1)

KARL C. ANDERSON	452
TOTAL WRITE IN	2
OVERVOTE	0
BLANK	132
TOTAL VOTES	586

State Senator (3)

BRIAN "BC" COLLARMORE	283
JOSHUA FERGUSON	236
BRIDGETTE REMINGTON	254
ANNA TADIO	267
DAVID "DAVE" WEEKS	214
TERRY K. WILLIAMS	208
TOTAL WRITE IN	1
OVERVOTE	3
BLANK	292
TOTAL VOTES	1758

Prop 5 (Reproductive Liberty)

YES	396
NO	161
OVERVOTE	0
BLANK	29
TOTAL VOTES	586

Representative to Congress (1)

BECCA BALINT	300
MATT DRUZBA	5
LIAM MADDEN	224
ADAM ORTIZ	12
ERICKA REDIC	29
LUKE TALBOT	4
TOTAL WRITE IN	1
OVERVOTE	0
BLANK	11
TOTAL VOTES	586

Assistant Judge (2)

STEPHEN P. BENARD SR.	293
DAVE WOLK	320
TOTAL WRITE IN	1
OVERVOTE	0
BLANK	558
TOTAL VOTES	1172

Auditor of Accounts (1)

DOUG HOFFER	310
RICHARD "RICK" MORTON	241
TOTAL WRITE IN	0
OVERVOTE	0
BLANK	35
TOTAL VOTES	586

Justice of the Peace (7)

BARRY GRIFFITH	328
BETSY JESSER	303
LEE WILSON	284
SALLY DEINZER	263
ADRIENNE RAYMOND	260
TRISH NORTON	258
TAFFY MAYNARD	248
LARRY CARRARA	236
LUDY BIDDLE	229
BOB FERGUSON SR.	198
LAVINIA SEIDE	179
JONATHAN GIBSON	162
STEVEN NICHOLSON	116
ROBERT KNUDSEN	89
ELIJAH LACHANCE	67
TOTAL WRITE IN	15
OVERVOTE	7
UNDERVOTE	860
TOTAL VOTES	3235

Governor (1)

PETER DUVAL	8
KEVIN HOYT	16
BERNARD PETERS	3
PHIL SCOTT	411
BRENDA SIEGEL	133
TOTAL WRITE IN	1
OVERVOTE	0
BLANK	14
TOTAL VOTES	586

State's Attorney (1)

IAN SULLIVAN	386
TOTAL WRITE IN	1
OVERVOTE	0
BLANK	199
TOTAL VOTES	586

Attorney General (1)

CHARITY CLARK	306
MICHAEL TAGLIAVIA	241
TOTAL WRITE IN	0
OVERVOTE	0
BLANK	39
TOTAL VOTES	586

Lieutenant Governor (1)

JOE BENNING	269
IAN G. DIAMONDSTONE	14
DAVID ZUCKERMAN	269
TOTAL WRITE IN	4
OVERVOTE	0
BLANK	30
TOTAL VOTES	586

Sheriff (1)

DAVID J. FOX	433
TOTAL WRITE IN	2
OVERVOTE	0
BLANK	151
TOTAL VOTES	586

High Bailiff (1)

JONATHAN "J.J." BIXBY	413
TOTAL WRITE IN	2
OVERVOTE	0
BLANK	171
TOTAL VOTES	586

SINGERS OF ALL AGES!

COME IN FROM THE COLD & DARK &
GATHER 'ROUND THE PIANO. WE NEED YOUR
VOICE. INSTRUMENTS & COOKIES ALSO WELCOME.
WE HAVE SONGWORDS & HOT CHOCOLATE.



SUN. DEC. 18, 3~5 PM
2022

SHREWSBURY MEETING HOUSE



MORE INFO? CALL JANET 492-3814 OR GRACE 492-3458

A Possible Answer to the Question: "What's Next?"

I hate to be the bearer (reminder) of bad news, but every day we are getting older.

Using my own experience as a presumed proxy for all of us, I don't like to think of various facts that could impair my ability to continue to live as I have for the past 22 years in a house and area in which I have become firmly rooted. Deep down though, I know that any or all of the following (and more) could occur:

- it could become unsafe for me to drive
- some of the charming quirks of my beloved house and property could make it unwise for me to safely remain by myself
- routine tasks like preparing meals, keeping the house warm and relatively neat could become hazardous
- I could become physically unwell and need assistance
- Fill in your own concerns

Over the past several years I have occasionally thought about alternatives and sometimes shared them with friends. But these thoughts have pretty quickly been shoved to the back of my mind. I know that I'm not alone.

A few weeks ago, Vicky Arthur and I attended a session sponsored by the Village to Village Network (VtoVN), a nationwide organization that "champions Villages as a cost-effective, sustainable model for healthy vibrant aging." A Village is not a place, but rather a plan that helps elders remain in their homes and communities. The event was attended by a group of about 30 people from the greater Rutland region, a group that included a few 40-somethings as well as us oldsters.

Vicky and I would like to invite someone from the VtoVN to come talk with a larger group of Shrewsberries sometime in the new year. People of any age are welcome! At this point there are 3 Villages in Vermont: open, active ones in Underhill Center and Hyde Park, and one under development in Montpelier. You can learn more about this organization at vtvnetwork.org.

Shrewsbury has had an informal organization for several years called "Living in Place" that for a while provided needed services like giving rides and/or meals to individuals who were unable to do these things for themselves. They also assembled a substantial collection of medical equipment and supplies that includes crutches, canes, commodes, and much more. This should be a first stop for anyone—"old" or not—who needs such items. Jan O'Hara 802-492-8687 can provide more information on these things.

As with any such community endeavor, the initial excitement and energy associated with solving a problem tends to wane after a while. It is my sense that the VtoVN has learned approaches to minimize this kind of burnout.

If you would be interested in attending a meeting with an experienced Village to Village Network participant and learning more about their model, please contact Vicky at singtolive57@gmail.com or Sally at sjad3@gmail.com. Before we contact anyone to speak with us, we want to be sure there's enough interest to make it worth their while to come down.

~ Submitted by Sally Deinzer



SHREWSBURY VOLUNTEER FIRE DEPARTMENT

A highlight of the past month was our annual fire safety program at the Mountain School. Principal Kristin Cimonetti generously afforded SVFD the entire morning of October 27 for the presentation. Safety Officer Bob Snarski and Fire Chief Phil Severy Sr. addressed the assembled students, joined by longtime firefighters Jamie Carrara and Barry Griffith. However, the most appreciated SVFD participants were our youngest members -- Phil Severy, Jr., Ethan Severy and Dylan Thomas. These current firefighters were students at the Mountain School not so long ago, and happily remembered as such by many of the students and their teachers. Will others at the Mountain School follow in their footsteps? We hope so!

After the indoor school assembly, the grades received separate tours of our fire trucks and equipment led by Chief Phil. The students asked a lot of good questions, and had their pictures taken in front of the fire engine. The morning concluded with a well conducted fire drill. We hope the students (and their teachers) learned a lot about fire safety and had a good time.

The most serious call in November (so far) was a mutual aid response to East Street in Clarendon for a fire at a mobile home. The occupant suffered burns, but a fast response was able to confine the fire to the bathroom of the home. It seems hard to believe right now, but just a few weeks ago we were called out -- at 3 AM -- to suppress a brush fire on Gilman Road. Now that colder weather and snow have arrived, it is time to pay attention to other hazards. Check your fire and smoke detectors. Change the batteries if needed. Make sure your furnaces, stoves and chimneys are serviced and clean. Keep your driveways open so that emergency vehicles can make it to your home if needed.

STAY FIRE SAFE.

~Submitted for SVFD by Barry Griffith




**Skip buying just "stuff"
Give a memorable gift of our**

Pure VT Maple Syrup,
Maple Sweet Treats &
Grassfed-Grassfinished Beef

Gift Cards Available


FARM.com
2450 Lincoln Hill
Shrewsbury VT 05738 | 802-492-2151

Farm Store hours
Wed thru Mon 10 am- 5 pm
Closing @ 3 pm on 12/24
Closed 12/25/22 & 1/1/23

SNOWSHOES
(Adult & Children)

Available for checkout
at the
Shrewsbury Library

Borrow for 3 days



**PLEASE STAY
TO SIDE OF TRACKS**

SHREWSBURY LIBRARY

Library News Submitted by Joan Aleshire

LIBRARY & FOOD SHELF HOURS

Monday 10 am to 12 pm

Tuesday 7 pm to 9 pm

Wednesday 10 am to 5 pm and 7 pm to 9 pm

Thursday 7 pm to 9 pm

Friday 10 am to 12 pm

Saturday 10 am to 12 pm

MASKS are optional. Wear one if you want to, and please don't visit if you're not well!

*** MANY THANKS to everyone who helped make the HALLOWEEN PARTY a success: DONNA SWARTZ, DORIS PERRY, SARAH TITTERTON, ERIN SARKOZY, ANN MARIE MOODY, GLORIA BENSON, of GLORIA'S PANTRY, for cookies and cookie-decorating, GRETCHEN GOULD, DANCE PARTY DJ and BOB KNUDSEN and PIERCES' STORE for the cider! We're grateful to the parents and kids who came and enjoyed themselves!

*** MANY THANKS to STEPHEN G. KRUEGER for his excellent presentation, "TRANS 101," on November 4th to a large audience of friends, neighbors and interested townspeople. Stephen is the Scholarly Publishing Librarian at Dartmouth College, and the author of several books, including Supporting Trans People in Libraries. We hope he'll return to give a presentation based on this book for local librarians and library trustees this spring.

*** QUILT DRAWING: SATURDAY, DECEMBER 3rd! Buy your raffle tickets ASAP; they're available at the Library and at Pierces'. If you're the lucky winner, we'll contact you!

Coming Events: The Program Committee will meet on December 14th to plan events for 2023, starting in February. If you have a presentation to suggest, please contact Joan: joanaleshire@vermontel.net.

Continuing Programs:

Sunday, December 11 @ 3:30pm: LIBRARY WRITERS' GROUP. If you're writing poems and/or short fiction, and would like to share your work, please join us the second Sunday of every month. Contact Penelope Weiss (pw9@earthlink.net) or Joan Aleshire (joanaleshire@vermontel.net) if you're interested.

Sunday, January 15 @ 4pm: FAMOUS BOOKS BOOK CLUB: Ivan Turgenev's Fathers and

Children, 2nd discussion. Please e-mail Joan if you need a copy: joanaleshire@vermontel.net.

Sunday, January 22 @ 4pm: SCIENCE BOOK CLUB: The group will read Best Science & Nature Writing 2022 in January and February. Print copies and e-books will be available. Please contact Margery Salmon: salmonm@vermontel.net.

New Books include: Some long-anticipated novels:

- Cormac McCarthy's *The Passenger*
- John Irving's *The Last Chair Lift*
- Barbara Kingsolver's *Demon Copperhead*
- Stephen King's *Fairy Tale*
- Jodi Picoult's *Mad Honey*
- Abdulrazak Gurnah's 2021 Nobel Prize-winning *After Lives*

And in non-fiction:

- Confidence Man: The Making of Donald Trump and the Breaking of America by the tireless New York Times reporter, Maggie Haberman.
- Getting Lost by Annie Ernaux, a memoir by the French writer, winner of the 2022 Nobel Prize.

New DVD's include:

- Nope: another wild ride by Jordan Peele, director of Get Out!
- The U.S. and the Holocaust, a documentary by Ken Burns

THE POLAR EXPRESS

**Holiday
Movie Night**

**AT THE
SHREWSBURY LIBRARY**

**FRIDAY
DECEMBER 9TH**

MOVIE BEGINS AT 6:30 PM

Popcorn Served - BYO Hot Chocolate
Pajamas, Blankets & Pillows Optional
All Ages Welcome!

**SHREWSBURY LIBRARY
98 TOWN HILL RD**



BOOK REVIEWS

- *****Fantastic*
- *****Compelling page turner*
- ****Enjoyable*
- ***Just O.K.*
- **Not recommended*

Remember

by *Lisa Genova*

★★★★★

The author, Lisa Genova, graduated valedictorian from Bates College and holds a PhD in neuroscience from Harvard. Despite her weighty credentials, she writes simply for every reader to easily absorb her "how to" points to strengthen our memory and also sidestep Alzheimer's later in life.

Sleep, it turns out, is critical in storing our memories and also warding off Alzheimer's disease. Adults need 7 to 10 hours of sleep every night to achieve these important benefits. Some people believe that older people need/require less sleep, but this turns out not to be true. Drinking red wine is also called out as an imposter in aiding our health. Oh no! Also on the imposter list is doing countless crossword puzzles, Sudokus and all puzzles in general! Diet and exercise, you might expect, are the key in our efforts to stay vital, and the diet suggested in this book is easy-peasy. So is the exercise.

So, when we walk into a room to get something and then forget why we went there in the first place...or forget where we parked our car, we needn't panic that we have Alzheimers. These lapses are perfectly normal (relief!), but we are offered simple tasks to attain better memory. I give this book five stars.

~Reviewed by *Marilyn Dalick*

Member of Shrewsbury Science Group

~~~~~

**Packing for Mars**

by *Mary Roach*

★★★★

Mary Roach adds a lot of levity to her work. She answers those questions one dare not ask, and this makes her work so engaging and funny--and interesting. This book is no exception. We find out the extraordinary lengths one must suffer to be an astronaut. Not just the danger of hurtling through space and the suffocating confinement in a small compartment for prolonged periods of time; not just the myriad tasks to perform, but also the effort it takes to do normal human things--like eat, drink, and "go to the bathroom." If you've ever wondered about the kinds of people who actually want this job and the scientific effort it takes to keep humans alive and relatively comfortable during space missions, then you will not be disappointed in Packing for Mars. Four stars from me. ~Reviewed by *Marilyn Dalick*

~~~~~

The Giver of Stars

by *Jojo Moyes*

★★★★

This story is historical fiction about Depression-era Kentucky and the program that Eleanor Roosevelt instituted. The female volunteers who take on the arduous and dangerous task of delivering books to the people in the mountains called themselves, the "Packhorse Librarians of Kentucky." The terrain is the least dangerous of their many obstacles. Ms. Moyes spins an exciting story, and sometimes you can sense what will happen, but it's fun getting there. This is the first book I've read by this author, but it won't be the last. I give this book four stars. ~reviewed by *Marilyn Dalick*

Saturday: December 10, 2022

and

Saturday: January 14, 2023

(second Saturday of the month)

7pm

at Russellville School House

18 Crown Point Rd (where CP Rd meets Russellville Rd)

It's the return of the

Community Music Jam

sponsored by **SAGE** in Shrewsbury, VT!!



Bring a song, an instrument, and plan to lend your voice or an appreciative ear

We'll provide: a Fire in the woodstove if it's cold, chairs, and we'll crack open the windows for some fresh air flow
A Restroom is available. Masks are optional

All ages are welcome. Please carpool if you can.
Donations to SAGE are appreciated.

For more info: call

Vicky at 802-492-3649 or Lisa at 802-492-2081

Wallingford Town Hall Concert Series Presents

Gypsy Reel

Wednesday, January 11, 2023 – 7:00pm

Wallingford Town Hall – 75 School Street

Gypsy Reel will be performing on **Wednesday, January 11** at 7:00 pm is known for playing high energy stirring music rooted in the Celtic tradition, but garnered from the whole world. Their music is an exciting synthesis of world rhythms and influences from 3 continents. The line-up includes talented banjoist Claudine Langille, Graham Parker – eclectic fiddler extraordinaire, Camille Parker on mandolin & bodhran and singing in French, Spanish and English, and Shrewsbury's own guitar extraordinaire, Silas Hamilton on standup bass.

All concerts start at 7:00 pm with suggested donations of \$10 to \$15/person with all proceeds going to musicians less 10 percent to the Town.

Please mark your calendar and join Wallingford's Concert series featuring Gypsy Reel on Wednesday, January 11. It is only thru your support that makes local live music possible.



NEWS FROM THE SNO-BIRDS

Mother nature has started to give us some snow now, that is a welcome sight at this time. We had a very nice fall with warm temps so the snow seemed to be more sudden this year to some. Shrewsbury usually gets snow around this time every year as you know.

The club will be ready to go on December 15th if there is snow enough to groom. My Dad at 90 will still be out grooming as he can and we are going to start working in at least one more operator for possibly grooming some of the trails, like 4&7 3 times a week if needed. Everyone needs to know that you can only groom if the conditions allow, sometimes you can only groom certain trails because of lack of snow or icy conditions.



Signs at US Route 4 crossing

If you have ever been on our trails walking, XC skiing or snowmobiling most generally our trails are pretty nice and you can expect the same this year and always expect the groomer on the trail at any time day or night as in some areas they take up a lot of the trail. Sometimes I groom on the left side of the trail to move the snow in different directions, I feel this is one reason the trails stay better than some. So if you see the groomer on the left, cautiously move to the right and do not pass the groomer without making sure that the operator knows you are there.

If anyone wants to help out with the added costs of fuel and everything else we always except donations whether you are a VAST member or a non-motorized user of the VAST trail system, every dollar helps maintain the trail system. We are all volunteers and do not get paid for all of our work on the trails, or all the hours grooming in the winter.

We finally received our new signs and Dave has prepped them and installed the first set at the US Route 4 crossing in Mendon. They look really nice and should help some to know where they are going and how to get back. It took 4 tries for the proofs to be correct. and Dave checked them again when he was prepping them but if anyone sees something wrong, please bring it to our attention.

Now all we can do is wait for mother nature and Dec.15th. I hope that everyone has nice Thanksgiving, Merry Christmas and a Happy and Safe New Year and also I hope to see you out enjoying the Shrewsbury Sno-Birds trails.

One last thing and most importantly we as Sno-Birds want to thank all the landowners that give us this great opportunity to have this great trail system for us to use in the winter months. Thank you again from all of us members of the Shrewsbury Sno-Birds and the whole VAST membership community!

Article by Roy Arthur

Shrewsbury Historical Society

www.shrewsburyhistoricalsociety.com

New Officers for 2023

At the Annual Meeting of the Historical Society held on Oct. 30, the following officers were appointed: President--Julanne Sharrow; Vice President--Penelope Weiss; Treasurer--Catherine Carrara; and Secretary--Pam Monder. Trustees Ann Ridlon, Liesbeth van der Heijden, and Margaret Field. Committee choice sheets were handed out. Next meeting will be May 21, 2023.

The museum is now closed for the winter. Appointments for research can be made by calling Brian Winkler at 492-3324. Please call Ruth Winkler if you would like to donate any artifacts. Space is minimal. The Society always has room for books and photos of our town.

Halloween and Thanksgiving

We have just finished enjoying the leftovers of candy for Halloween and now it is time for giving thanks for our beautiful town, for our people who get involved in all kinds of activities, those who volunteer, and those who hold official titles. Thanks to our wonderful *Times of Shrewsbury*. Thanks to the talents of many and to the kindness shown by folks who live here. Thank you to Grace Brigham for her leading our Society for six years as President and as co/president for 3 years with David Rice, Con Winkler and Brian Winkler. Thanks to Society members who volunteered to be docents for Bowman's Laurel Hall tours, giving Barry Griffith a helping hand in his and other members of the Laurel Glen Cemetery Assoc. in their quest to restore this historical home.

Christmas Past

It was during the Christmas holiday of 1983. I was alone here awaiting Con's following up to join me. Our forever home here was ready for retired folks to stay for good. I was invited to go down to Fran Brigham's for a hello and welcome. It was getting dark, I grabbed a flashlight and was on my way. on foot. After we chatted a while, she suggested we walk across to visit Gracie and see the new arrival in the barn. It was cold and dark and there was a slight snowfall coming down. I was completely enchanted on entering the warm barn and seeing the wee baby cow. We then walked into the cozy home of Gracie who was entertaining friends, all of whom I did not know. All I remember is that everyone had rosy cheeks, perhaps from the wine, cider or just coming in and defrosting from the cold. All beautiful people. A delightful memory I cherish.

Christmas Present

Fast forward thirty-nine years. I have tons of photos of our beautiful decorated trees from Russell Reay's tree farm Paxton Greens, just a few steps away. How lucky could we be?

Happy New Year 2023

On behalf of the Shrewsbury Historical Society, I send all good wishes for good health and a brand new year of our Museum's happenings, like finding out more information about the ski tow line that was engineered by the CCC men placed high on a steep hill in the 1930s in North Shrewsbury, and its machinery uncovered by Mark and Connie Youngstrom and Sandy Bragg. May peace and joy be yours in the new year. (Editors Note:

Watch for article on this discovery in a future edition)

Submitted by Ruth Winkler

“A Sweet Pressing”

On Saturday October 20 Peter Grace fired up his beloved W.G. Runkles vintage press for the production of this year’s Sandy Cider. Apples were scarce this year, but I was able to scrounge 60+ five-gallon buckets with the help of a friend. Those who took home fresh cider were reminded to pasteurize (160 degrees for 15 seconds). We include dropped apples because the alcohol in the hard cider and brandy zaps any nasties, so pasteurizing is important.



Collecting this year was a real challenge. In a normal year the trees will average four or five buckets per tree, and it might take only a dozen trees to get to 60 buckets. This year it took 36 trees including some with only a handful of apples. The good news was the variety of the apples—mostly from wild trees—with hues of red, yellow and green, ranging from small crabs to very large. I write where apples come from when I test to see how sweet they are. (see photo).

There were various options for joining in at the pressings: the sorting table where apples are separated from detritus and any rotted apples removed; the washing trough; the press which has a few different activities – loading apples into the hopper, folding the chopped pomace into cloths and stacking them for the press (the stacks are called ‘cheese’—don’t ask me why); dumping pressed pomace into bins and returning used cloths and slats for use in the ‘cheese’ Or people could just chill and socialize.

Kudos to the valiant W.G. Runkles press which hummed, whined, and creaked through another session, with a few time-outs for TLC. (see photo)

This year’s cider was sweeter than I expected. It tests between 13 and 14 Brix (one degree Brix is one gram of sugar in 100 grams of solution). The average for Shrewsbury apples is around 11 or 12 Brix, and given this year’s conditions I had lowered my standards to collecting from trees testing 12 Brix or higher (most years my cutoff is 13+ Brix). Not the sweetest cider I’ve pressed (16 Brix), but still very good. If the cider is fermented bone dry (which I will do for the Sandy Brandy) it will yield around 7.5% alcohol by volume (abv).

For comparison, an average wine grape is around 20-22 Brix, which yields between 11.5% and 13% abv. A big red wine with 14+% abv is either from a super-sweet grape or the winemaker is adding some sugar.

This year’s cider batch is also testing with more acidity than usual, which makes the fresh cider especially tasty but presents some challenges for fermenting the hard cider. I’ll need to try to keep more residual sugar than usual to balance out the tartness. My process is 100% natural—nothing added – so the strategy is to harass and frustrate the little ‘yeasties’ as they seek to gobble up the sugar to make alcohol. A cold winter would help!

~Sandy Bragg



Fit to drift on air
Gossamer wings of milkweed
Seeding next year’s crop

Haiku by John O’Dowd
Photo by Kay O’Dowd

Time is Ticking

What I used to be
To some degree
Isn’t anymore

I am not the same
Except my name
Don’t know what’s in store

I am totally new
And yet I do
Myself still hold allure

My cells have changed
A body deranged
Aches and pains for sure

What can I do
To become anew
There must surely be a cure

As years go by
With corrected eyes
I’ve kept my curly coiffure

By Thomas Hartigan



SUNDAY FUN DAY
SHREWSBURY COMMUNITY
CHURCH ROOMS

10:30am -11:30am
NATURE OUR WAY
AGES 4YRS AND UP

PROJECTS, STORIES, SNACKS
AND OUTDOOR FUN

The Shrewsbury Community Church



Compiled by Sue Ransom-Kelley



News: Exciting things are happening at the Shrewsbury Community Church! We are celebrating the Advent Season. We've decorated the sanctuary with fresh balsam wreaths, our nativity scene, and a glorious Christmas Tree! All are welcome to join us any Sunday at 10:30am at the center church which is on the second floor of the meeting house. Come and enjoy the beautiful music, hear an uplifting message from our Pastor, and visit with your neighbors. There is also a Fun Day Program for kids!

Remembering our Loved Ones: If you would like to have a wreath or poinsettia placed in honor or in memory of a loved one in the sanctuary for the holiday season please make checks for \$15 for a wreath or \$10 for a poinsettia payable to the Shrewsbury Community Church and mail to Sue Kelley PO Box 366 Cuttingsville, VT 05738.

Annual Wreath Decorating Celebration

The Kids will be decorating fresh balsam wreaths to take home on December 4th at 10:30. If you would like to participate in this activity please call Sue at 802-779-4825 or contact Cortney Allard via Facebook to RSVP so we make sure to have enough wreaths for each child.

INVITATION TO THE COMMUNITY:

The community is cordially invited to attend our Christmas Eve Candlelight Service at 7pm on Dec 24. Christmas Eve is a special time for us! It's an evening of carol singing and listening to the Christmas Story through scripture readings. The service will be led by Pastor Wendy and community members. It's always a delight!

Holiday Giving:

We will be providing gift and grocery cards for folks in Shrewsbury during the holiday season. If you or a neighbor would like to be included, please call Sue at 802-492-3738 or 802-779-4825.

Community Church Calendar

- Sunday, Dec 4, 10:30am Fun Day Program for kids. Worship Service with Holy Communion led by Wendy Savery.
- Sunday, Dec 11, 10:30am Fun Day Program for kids. Worship Service led by Wendy Savery.
- Sunday, Dec 18, 10:30am Fun Day Program for kids. Worship Service led by Wendy Savery.
- Saturday, Dec 24, 7pm Candlelight Christmas Eve Service of Carols led by Wendy Savery.
- Sunday Dec 25 No worships Service or Fun Day Program. Merry Christmas!
- Sunday, Jan 1, 10:30am Fun Day Program for kids. Worship Service with Holy Communion led by Wendy Savery.
- Sunday, Jan 8, 10:30am Fun Day Program for kids. Worship Service led by Wendy Savery.
- Sunday, Jan 15, 10:30am Fun Day Program for kids. Worship Service led by Wendy Savery.
- Sunday, Jan 22, 10:30am Fun Day Program for kids. Worship Service led by Wendy Savery.
- Sunday, Jan 29, 10:30am Fun Day Program for kids. Worship Service led by Wendy Savery.

Community Food Shelf

Free Community Food Shelf at the Library in the front entry way. Those in need are welcome to help themselves any time the Library entryway is open. Limited hours are: Mon 10am-12noon; Tues 7-9pm; Wed 10am-5pm and 7-9pm; Thurs 7-9pm; Fri 10am-12noon; and, Sat 10am-12noon.

We have our additional Summer Food Shelf on the side porch at Pierces Store in North Shrewsbury. Those in need are welcome to help themselves.

Food Delivery and Assistance: If you are unable to get to the Food Shelf at the Shrewsbury Library, we will deliver groceries to you. If you need items that are not available on the shelf we can provide grocery gift cards. Call Karen at 802-558-5991 or Sue 802-779-4825 or 802-492-3738.

Community Needs

- Wedding, Funeral or Memorial Service Requests: Contact Donna Smith 802-492-3367; or Sue Kelley 802-492-3738, 802-779-4825
- Community Helping Hand Requests: Contact Donna Smith 802-492-3367; Sue Kelley 802-779-4825, 802-492-3738; or Karen Lorentz 802-558-5991. Shrewsbury residents experiencing financial hardship. Assistance can be given for basic needs (food, heating, gasoline, etc). If you or a neighbor are in need, please let us know!
- Pastoral Care, Home, Hospital Visitation, Outreach Requests: Contact Roxanne Ramah 802-492-3675 or Ruth Kinne 802- 775-5318.

Remembering our Loved Ones: If you would like to have a wreath or poinsettia placed in honor or in memory of a loved one in the sanctuary for the holiday season please make checks for \$15 for a wreath or \$10 for a poinsettia payable to the Shrewsbury Community Church and mail to Sue Kelley PO Box 366 Cuttingsville, VT 05738.

___ Wreath or ___ Poinsettia in honor or in memory of _____

Given by _____

Lollipops and Pyramids End Fall Color Season

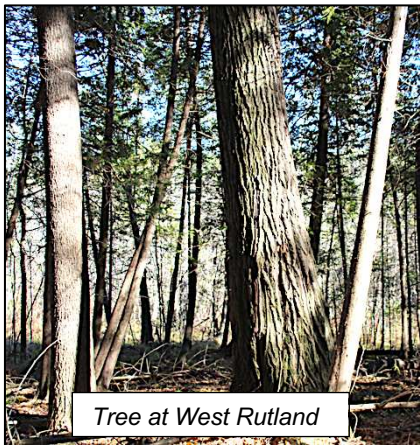
Two tree species, a lollipop and a pyramid, drew the color curtain on fall with their usual scattered but beautiful yellow/gold leaves crowning our lower and mid-elevation slopes. The lollipop is the hardwood and the pyramid the needled one (yes one conifer species does lose its needles). And then the leaves were quickly gone adding to the tons of forest leaf litter on its way to being mulch, insulating soil this winter, and adding soil nutrients next spring. With the leaves absent so what is the best way of identifying trees by species. Winter, especially with mature trees, leaves us to look at bark as the major characteristic. Several years ago Michael Wojtech's book entitled BARK A Field Guide to Trees of the Northeast came out which helped in this difficult IDing process. Bark is not as consistent as leaves are and also changes as the tree gets older, as rates of growth change over time, and where on the tree the bark is observed (lower trunk or upper crown).



Mitchell Road Tree

After the leaves had fallen two different tree species came up for discussion. One is a collection of several trees on the Mitchell Road in Shrewsbury and the other is a very large tree along the West Rutland boardwalk trail. Any forester or arborist who has spent time amongst trees can identify most of the common trees of Vermont and perhaps New England by bark. It becomes a part of you until you encounter one that is "just not right". The Mitchell Road trees all exceed 12" with beautifully formed straight stems and full crowns. They look like ash but are not and

after comparing the bark with several other species the conclusion is that they might be a hickory. Hickories are certainly a rare tree to be found in the northern hardwood forests of Shrewsbury or Killington and how these got there is anyone's guess although being found along a town road certainly suggests having been planted. The three most common species are found most often on dry, very shallow soils, in western Vermont. Of the three bitternut hickory is the most likely candidate, at least until Spring when the leaves come out and other tree ID characteristics become available.

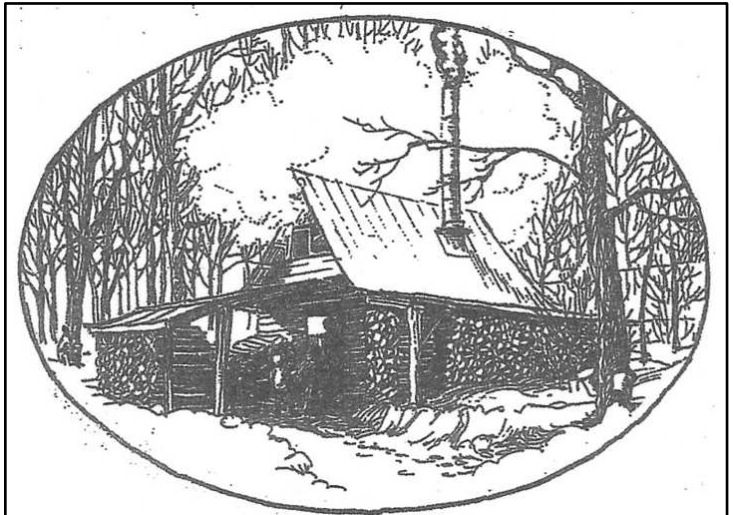


Tree at West Rutland

The other mystery tree, in West Rutland, is mixed in with some very large white pine and hemlock but more than holds its own in size at over three feet in diameter. Its location as a part of this undisturbed forest suggests that it is part of this natural setting rather than having been a planted addition to it. A look at the lower bark

made it appear to be a red oak but the upper crown is a silvery white as though an aspen. It can't be both. The silvery crown rules out oak as the species and, like the hickories, only two or three aspen are possible candidates with quaking or big tooth being the best possibilities. Based on tree size this would be a new state record "big tree" for either one. Again Spring, as much as bark is helpful, will solve the mystery.

So as we move into looking at trees more from our windows than the woodlot give credit to trembling aspen and American larch for sending us off from one season and into the holiday season of basic green and other seasonal colors that we add to it. As for me I'll spend some time perusing Michael Wojtech's book looking for clues. ~Article by Gary Salmon. Tree Warden



MAPLE SYRUP
MAPLE WALNUT FUDGE

Made the Traditional Way over a Wood Fire
by the

Krueger-Norton Family
Shrewsbury, Vermont 05738
(802) 492-3653

knsh@vermontel.net
www.KruegerNortonMaple.com

We ship anywhere!

YOUR TICKET TO BETTER HEALTH

Sparkling Imaginations for Over 22 Years!

Thrive Center
OF THE GREEN MOUNTAINS

Chiropractic Care, Applied Kinesiology,
Therapeutic Massage/Bodywork,
Holistic Health Education, Nutritional
Supplements, Coaching, Worksite Wellness



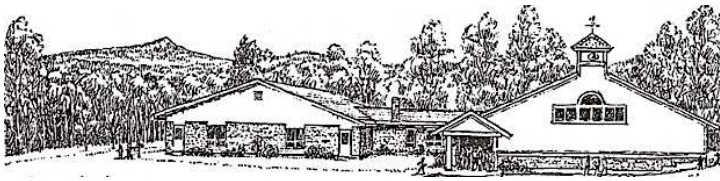
Joseph P. Donohue, DC



Lisa Marie Donohue, MA, LMT

Serving the Community with Excellence and Compassion Since 2000

68 South Main Street Wallingford, VT • 802.446.2499
uthrive@vermontel.net • thriveinvermont.com



SHREWSBURY MOUNTAIN SCHOOL

Important Dates:

- Dec 5: Winter Concert at 6:30pm - all community members are welcome to attend!
- Dec 20: School Ice Skating Field Trip

Food Drive:

For many years now, the students of the Shrewsbury Mountain School have partnered with students in the National Honor Society at Mill River Union High School, and their teacher-leader Mary Colvin, in order to provide support for local families in need through a December food drive.

Ms. Rice's 2nd grade class organizes the food drive at SMS by explaining the project at an all school assembly and collecting and counting the nonperishable items as they come in. Ms. Rice and Ms. Colvin work to collect donations of turkeys, and items such as milk, bread, potatoes, and eggs with the generous donations of local businesses and individual donors. The food drive culminates with the 2nd grade students taking a trip to MRU to help put the food boxes together with the NHS students. The food goes to local families right before the schools' December break.

It is a truly heartwarming, community-based tradition where students can actively participate in helping others!

Donations:

We are in need of ski helmets for our students to participate in the winter sports program this year. Every K-6 student will need a helmet in order to ski, snowboard or ice skate. We welcome any child sized helmet for our students! We are also accepting art supplies and non-perishable food items for the food drive!

Tri-M Music Honor Society Coat Drive: This student club is collaborating with the five schools in the district to get new and gently used winter coats of all sizes to be offered to community members in need. Please send in any coats that you wish to donate and we will place them in the large collection box in front of the Main Office.

Our students have had incredible experiences this school year learning in their classrooms, learning in their outdoor classrooms, working together to plant trees on our campus, learning off campus on field trips and have been meeting their student created goals of: Be Safe, Be Kind and Be Your BEST! I am so proud of our faculty and staff, their dedication to our students and how we all partner together in this community to keep our children first! I hope you all have a wonderful winter holiday season. ~Kristin Cimonetti, Principal

MILL RIVER UNIFIED UNION SCHOOL DISTRICT NEWS

November and December are busy months for our schools. Benchmark testing has been largely completed and our kids have entered the "meat and potatoes" period of the school year. Books are being read and discussed; stories, reports, and persuasive papers are being written; and athletics, music, theatre, and arts programs are all working at producing their best work and effort to share with fellow students and the community. Every school has scheduled holiday concerts, please check the individual school schedules if you would like to attend any or all of these programs.

By the time another Times is published the elementary kids will have started their schools' version of out winter athletic programs. Shrewsbury is hoping to head to Okemo and is trying to work out the details in the next few weeks to make that happen. One of the difficulties is our bus driver shortage. Many times since school has opened the word has gone out that we are on "consolidated" bus runs that day. This is a nationwide problem that is not improving. If you have ANY interested in driving a bus- even on an on-call basis, we welcome you. The district has very competitive hourly rates and will help with attaining your CDL and/or bus endorsement.

November and December are also the months when a budget is prepared for voting on at Town Meeting in March. This year as in most, we are looking at rising costs and shrinking state and federal funding. The Board's Finance Committee is tasked with trying to balance our needs as well as our wants for our schools and the job is extremely tough this year. The State of VT changed how it pays for the added costs of Special Education students and this has left a significant hole in our budget. Costs for everything- staffing, insurances, heating fuel, etc- has increased by many percentage points.

The Finance Committee is hoping that community members attend the forums (1st was 11/21) where we present the possible scenarios our budget for the coming year may follow. We will announce future dates and times by email and on FrontPorchForum. Please come and share your perspective on where we should be headed as a district. If you feel more comfortable speaking 1:1, please share your thoughts with a board member. Please don't wait until the voting booth to share your opinions and thoughts!

On another note, I plan to resign my school board seat in January (after budget work is completed and within the time to have a petition completed) and hope that anyone reading this considers whether they have the time and commitment to join the school board. I have truly enjoyed my 20+ years serving on the many board iterations that I've been a member of and hope that whoever decides to run do so hoping to be a positive force on the board. FYI, within a month the board will need to appoint someone to serve for the time between when I resign to Town Meeting Day when someone will be elected to fill the final 2 years of my term.

Thank you to all who support our schools!!!!!!

~Submitted by Adrienne Raymond (802-492-3578)



A Taste of Brazil Right Here in Shrewsbury

November 18 six students and two guests paid a visit to Brazil here in Shrewsbury. Heather Shay and Scott Garren hosted the event at her home. The students were Donna Swartz, Dick Swartz Ed Sawyer, Sally Deinzer, Linda Berryhill, Ed Hemmer , John Berryhill, and Daphne Hemmer joined us for dinner.

The menu was Brazil's National Cocktail, Caipirinhas, followed by Bacalhau a Gomes de Sa (Salt Cod, potato and onion casserole) and Salad...then Feijoada (Pork and Black Bean Stew) with Rice, and lastly three Brazilian sweets: Beijinhos de Coca, Brigadeiros and Coconut Kisses. All proceeds went to support Pierce's Store. ~Submitted by Heather Shay; Photo by Scott Garren



Respect • Protect • Enjoy

SAVE THE DATES!

Put these SCC Walk and Talks into your Calendar!

February 5: 10-12:00

a Guided Walking or Snowshoeing Tour of the Stewart Maple Operation

March 11: 9 – 12:00

Co-hosted with the Mt School!. Learn about Bluebirds and Make Your Own Bluebird Box! All ages invited.



Shrewsbury Mountain School PTO Holiday Fundraiser

10 oz. Yeti travel mug with magnetic-slider lid and Shrewsbury VT logo

Available in three colors: Nordic Blue, Alpine Yellow, or Stainless Steel \$25 each

Available at Stewart Maple & Pierce's Store Limited quantities so be sure to get them while supplies last! Help SMS and our local businesses thrive by choosing to spend our dollars locally!

Looking for a Drum Set!

Do you have a drum set in your basement that no one plays anymore? Our family would be happy to buy it.

To reach Kara: call 492-6265 email eveningsongcsa@gmail.com text 802-342-4304



Happy Holidays!

shop Vermont products this season for handcrafted, local & pure gifts for your loved ones *we ship gift boxes!*

**Thursday - Saturday 11-6
Sunday 11-4**

**5444 VT ROUTE 103 SHREWSBURY, VT
www.stewartmaple.com**



71 Years Ago...

It's interesting to scan through old town reports. For some reason we have the 1951 Shrewsbury Town Report in our house and I recently read through it. It is also interesting that Shrewsbury experienced it's lowest population, since the late 1700's, during the 1950's, with only 464 residents in 1950 and 445 in 1960, compared to a high of 1,289 in 1830 and 1,098 in 2020.

A few items in 1951 were unique to that time:

1. UP IN THE AIR. IT'S A BIRD. IT'S A PLANE

"Mr. (Wayne) Sarcka spoke on Civilian Defense. He brought to our minds the necessity of building a strong local Civilian Defense unit. At the present time there are no funds available. Steps have been taken to organize an Air Craft Warning Station at Spring Lake Ranch, at no cost. At present there have been 48 or 50 volunteers. A housing survey is being taken to establish available housing quarters in time of an emergency. According to information by President Truman it is shown that in case of an air bombing attack, it is estimated that 60 out of every 100 bombers would get through for their targets Mr. Sarcka also brought out that a Mobile Medical Unit should be established at once. That Vermont is in a direct path for a bombing attack. He urged for complete cooperation. The Civilian Defense Board for Shrewsbury is Wayne Sarcka, chairman, Hugh Pratt, Lyle Van Guilder and Richard Johnson as deputies."

2. IS THERE A DOCTOR IN THE HOUSE?

"Mrs. Arthur Patton spoke on the question of obtaining a doctor for the town. Several suggestions were made to offer financial help for a doctor, if needed. One was to assess each tax payer \$5.00 to create a fund. This amount to be allocated to each tax payer upon receiving medical aid from the Doctor. This was voted down. Mr. Patton moved that the Selectmen be given authority to sign a note on the Town for the benefit of the doctor, up to \$1,500, provided the doctor sign a like note to the town for a similar amount, plus a contract to stay in the area at least 5 years. It was so voted. The Health Committee..... were directed to continue their efforts to obtain a doctor."

3. NO BEER AT PIERCE'S STORE (OR ANYWHERE ELSE)

"Shall the Town vote to grant licenses for the sale of malt and vinous beverages: Yes 26 No 48"

"Shall licenses for the sale of spiritous liquors be granted: Yes 24 No 48"

4. INFLATION? WHAT'S THAT?

During 1951, the Town spent: \$6.95 for shovels at the W.E. Pierce store, \$38.40 for insurance for the Town Hall, \$26.85 for electricity for the Town Hall, \$173.51 to print town reports, road gravel at \$0.10 per yard, rental of excavator at \$8.00 per hour, and rental of dump truck at \$4.00 per hour. The highest teacher's salary was \$1,703.

The value of the Town Hall was listed as \$1,200 (currently insured for \$1.3M). The value of all 5 schoolhouses (Cuttingsville, Center, Northam, Russellville and Eastham) was \$4,500. Insurance for all schoolhouses was \$71.10.

~Article by Mark Youngstrom

Shop Small This Holiday Season at

"Wally's Corner"

5304 VT Rt 103,
Cuttingsville, VT 05738

Wednesday-Sunday 11am-6pm

This December marks the 1 - year anniversary of Wally's Corner joining this wonderful community. We are so honored to have been welcomed into this area and are happy to provide the community an extra place to shop gifts for all occasions. Some of the highlights we're carrying this holiday season are:

- Gift Baskets
- Jigsaw Puzzles
- Locally-made pottery
- Embroidered journals & unique handmade paper art
- Succulents & other potted plants
- Hand-crafted clay face masks & black soap



PAXTON GREENS NOTICE

Paxton Greens sales this year are under the direction of Rayon Watson of New England Christmas Tree Services at nectslc@gmail.com

Hours of operation, prices, and procedures may vary from past years.

~Russell Reay

THE BEST FOR YOUR FAMILY



Why pay Market Prices when you can come to the farm!

Quality food makes a memorable gift!

100% Grassfed grass finished beef

and our Vermont Maple Syrup

Farm Store Hours

Wednesday thru Monday - 10 am - 5 pm

CLOSED Tuesday - Call for appointments

GIFT CERTIFICATES
AVAILABLE

Directions From:

Rutland: Left off VT RT 103 just 2.5 miles - on the right

Cuttingsville: Just 2.1 miles up Town Hill Rd, right on Lincoln Hill



2430 Lincoln Hill Road, Shrewsbury VT. 05738

SmithMapleCrestFarm.com

802-492-2151

maplecrest.info@gmail.com

We Ship Syrup All Over The USA



A Good Time Was Had By All!

Musicians and music enthusiasts gathered at the Russellville Schoolhouse on Saturday, November 12 to play music, listen, dance, teach each other songs, and chase away the gloom of a chilly November night. Also chased away was the gloom caused by not sharing music with each other over the past few years. Featuring guitars, mandolins, fiddles, percussion, the ukulele, banjo, voices and Jolly's "leaf", a variety of tunes were played from folk to blues and from country to a cappella. Ages ranged from seven to ages that start with the number seven and have another number after that. And up.

Organized by Vicky Arthur, Paul Sgalia, and Lisa Gardner and supported by SAGE, the Schoolhouse music jam picked up where it left off when it was last held in early March 2020. If playing music together was fun back then, it felt both magical and healing to take it up again in 2022. And the events will continue! The next two will be on December 10 and January 14 (the second Saturdays of the month) at 7pm. All are welcome – established musicians and aspiring beginners and those who love to be in the presence of music. Participants are encouraged to bring a song or two to share with the group. If that sounds intimidating, people are encouraged just to show up and enjoy the gift that is sharing music with your talented and enthusiastic community!

-Article by Lisa Gardner; Photos by Vicky Arthur



Sage began in 2012 as a non-profit organization to promote traditional and innovative agriculture. We added support for the arts to our mission in 2020. We sponsor workshops, concerts, spoken word readings, and more in the Russellville Schoolhouse. Watch for announcements of our events in the Times of Shrewsbury and visit our website:

www.sagevt.wordpress.com

You can follow us on Facebook, contact Stephen Abatiell at educate.sage@gmail.com, or call Joan Aleshire: 802 492-3550. ~Submitted by Joan Aleshire



Organic Seeds Fundraiser Announcement

Shrewsbury Mountain School PTO

The Shrewsbury Mountain School's PTO will be selling High Mowing Organic Seeds (a Vermont based, USDA organic, and non-GMO seed company) again this February. If you plan on purchasing seeds for a garden this spring please consider ordering through this fundraiser. Our school will receive 60% of all proceeds! More information on how to order will be in the February Times.

SMS Students Plant American Chestnuts

Imagine pulling up to the Shrewsbury Mountain School one chilly, glorious November day and being greeted by Kristin Cimonetti, our new principal of the Mountain School, several of her fellow teachers, a group of cheerful, fun, engaged pre-kindergarten students paired with fifth and sixth graders, a good friend Tom Rantenan and our town forestry mentor Gary Salmon, all ready to plant nine American Chestnuts. I received these nine chestnuts from Tom Estill, a lifelong science teacher, naturalist and space educator now living in Rutland, who has dedicated a large part of his retirement to restoring American Chestnuts to Vermont. As of last summer, he had planted over 240 chestnuts at schools and religious institutions in Rutland and continues this mission with students.

On November 10, we assembled, dug nine small holes for our 5-inch saplings, pounded in stakes and placed protective cones around them to keep the deer at bay. We'll monitor these closely and will replace any that don't survive the winter with new ones. Imagine in 50 years what they'll look like all lined up around the outer edge of the athletic field on either side of the slide.

American chestnuts were once common across New England but were then all but wiped out by a blight in the early 1900s. The American Chestnut Foundation has been dedicated to restoring chestnuts for several decades and thanks to people like Tom Estill, we're seeing great success in this restoration. They have the potential to grow over 100 feet tall and over 10 feet in diameter. Chestnut trees have numerous beneficial attributes that make them critical to the health of a vibrant forest. Of the 50 we planted at Jockey Hill Farm in May, all but five appear to have made it through the drought. Please come visit if you're interested.

Thanks to Kirstin and Gary for making this event happen. Nothing quite beats hearing students talk about what trees mean to them. It was a rewarding team effort which the Mountain School is so well known for.

~Submitted by Tim Stout

SHREWSBURY OUTING CLUB NEWS

On behalf of the SOC a big heap of gratitude for everyone who came to the SOC sponsored trail maintenance day. There were SOC members, Shrewsberries, family and friends of Shrewsberries, and folks who cherish our delightful and peaceful Plymouth Trails. Many people came, which allowed us to get much farther on the ditch work. It was certainly a mighty effort by all! Let the snow begin!

Submitted by Lana Vanucchi

NEWS FROM REINBOW RIDING CENTER

Finishing the season at Rainbow Riding Center brings a sigh of relief because we all get a short vacation, and the horses get a long winter vacation. But soon the work of planning, fundraising and prepping for our 2023 season begins. Starting with our annual fundraising appeal and a new website that will be up and running in the next few weeks, we'll spend the winter developing new programs, improving on-going programs, seeking more volunteers and writing grants to provide funding for all we want to do when the grass is green again.

We would also like to take this opportunity to thank everyone that lent a hand this season—especially our cadre of dedicated volunteers who continue to go above and beyond to help us provide our services. We welcome two of our volunteers—Patricia Vogel of Belmont and Stacey Synott of Shrewsbury—to the RRC Board and can't wait to put them to work. Also thank you to Alexandra Yuster and Faith Tempest for providing a wonderful location—Stonewall Farm—for our program.

Please visit our website: rainbowridingcenter.org, and follow us on Facebook and Instagram @rainbow_riding_center. Contact us at programs@rainbowridingcenter.org or 802-236-2483 to inquire about lessons. For information about opportunities to volunteer with us contact janetupton@rainbowridingcenter.org. *~Submitted by Janet Upton*

CONCERT

FEBRUARY 4TH

7PM

SHREWSBURY MEETING HOUSE

Free Will Donation

MESSIAH: The Rutland Area Chorus will be presenting Handel's Messiah December 4, 2022 at 3:30pm and 4pm at the Grace Congregational Church, 8 Court Street in Rutland. The concert will also include the world premiere of the winning work of the Grace Church Composition Competition and Nun komm, der Heiden Heiland, BWV 61 by J.S. Bach

Come enjoy this Rutland area Christmas tradition with eight of your fellow Shrewsberries who are members of the chorus. Free Will Donation



NEWS FROM PIERCE'S STORE 802-492-3326

Bob Knudsen, Manager

Pierce's Store Needs You! Annual Membership Drive

If you have not renewed your co-op membership at Pierce's Store, or if you want support Pierce's by being a new member, now is the time. Memberships are on a calendar year basis and only cost **\$20**. While everyone can shop at Pierce's, memberships help sustain this valuable and treasured resource, which has served Shrewsburies for over a century.

You might ask, "Why should I become a member? What's in it for me?" There are many reasons to support a small, local cooperative store, but these are the most compelling:

1. Pierces significantly supports the local economy. It is projected that by the end of the year, Pierces will have paid over **\$130,000** to Shrewsbury neighbors and businesses in terms of services, products, and payroll. At Pierce's, one can buy local syrup, meat, eggs, farm produce, baked goods, and artisans' products/crafts to name just a few. This is neighbors supporting neighbors.
2. Members can get a 2% discount at the cash register.
3. Members can have input on how the store continues to serve the community and vote on who serves on the Board of Directors.

Please take the time to fill out the easy tear-off form at the bottom of this page. Bring the form along with \$20 to the store and we will add you to the membership list. Alternatively, you can also mail your membership to: Ed Hemmer, 32 Kieffer Road, Shrewsbury, VT 05738.

Thank you for being a part of Pierce's. "**Marjorie would be pleased**", to steal the title of Sally Deinzer's book on how Pierce's Store transitioned from the former family-owned store to what it is now. ~Submitted by Pierce's Board of Directors

Shrewsbury Cooperative at Pierce's Store Membership Form

Name: _____

Email: _____

Phone: _____

Address: _____

Please return to Pierce's Store with your \$20 membership dues. Thank You!

RIVERWOOD LAWN CARE, LLC

Fully Insured

Patrick Angstadt
802.770.0433

riverwoodlawn care@gmail.com

Mowing, Trimming
Spring and Fall Cleanups

FREE ESTIMATES



- ◆ Handmade and Local Goods
- ◆ Artisanal Foods
- ◆ Gardening and Home Decor
- ◆ Antiques, Toys, and More!

5304 VT Route 103, Cuttingsville, VT 05738

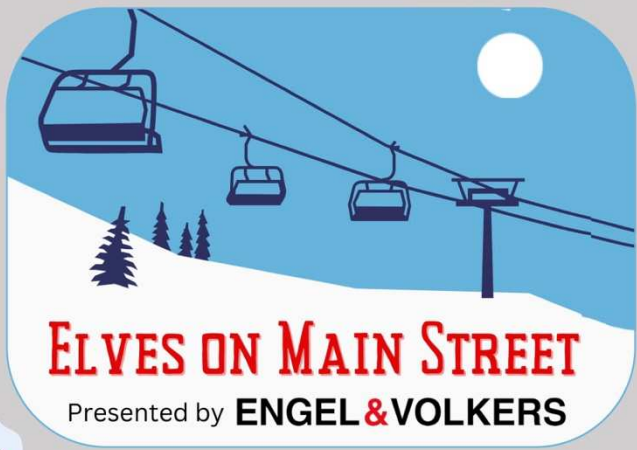
Hours: Wednesday-Sunday 11am-6pm

www.wallysvt.com

hello@wallysvt.com

(516) 522-4174





ELVES ON MAIN STREET

Presented by **ENGEL & VOLKERS**



SPY AN ELF?
Enter to win money and gifts!



View participating locations:
www.okemo.evrealstate.com/blog





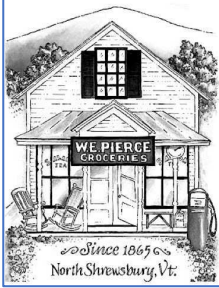
THANKS TO THE CONTRIBUTING JOURNALISTS, PHOTOGRAPHERS, & ARTISTS!!

The *Times* is grateful to the contributors of 2021 who provided articles, poetry, stories, drawings, general information, photos, and letters to the editors. Their submissions help to make the *Times* more interesting and informative....and useful for us all!

- | | | | |
|--------------------------|---------------------------|------------------------|--------------------------|
| Larry Abelman | "Mother Earth" | Turiya Levy | Lavinia Seide |
| Stephen Abetelli | Judy & Jack Emmerick | Chryl Martin | Heather Shay |
| Joan Aleshire | Nils Ericksen | Terry and Vicky Martin | Alan Shelvey |
| Vicky Arthur | Chuck Finberg | Gerry Martin | Linda Shelvey |
| Roy Aruthur | Ryan & Kara Fitzbeauchamp | Taffy Maynard | Martha Sirjane |
| Ahmet Baycu | Lily French | Lynn McDermott | Bob Snarski |
| Nancy Bell | Jerry Gardner | Susannah McGown | Gina Stewart |
| Goria & Mike Benson | Lisa Gardner | Linda McGuire | Tim Stout |
| Oded Benyo | Scott Garren | Jeff Monder | SMS Students |
| Kristine Billings | Jonathan Gibson | Pam Monder | Anna Sutton |
| Rich Biziak | Tom Giffin | Ann Marie Moody | Donna Swartz |
| Laura Black | Gretchen Gould | Steven Nicholson | Davis Terrell |
| Sarah Bolster | Sam Green | Logan Nicoll | Amy Thomas |
| Sandy Bragg | Barry Griffith | Trish Norton | Cynthia Thornton |
| Grace Brigham | Barb Griffith | John O'Dowd | Kate Tibbs |
| Karly Carrara | Thomas Hartigan | Kay O'Dowd | Sarah Titterton |
| Catherine Carrara | Betsy Jesser | Janet Pelletier | Janet Upton |
| Kristin Cimonetti | Sue Kelley | Jack Perry | Liesbeth van der Heijden |
| Carrie Clancy | Bob Knudsen | Roxanne Ramah | Lana Vanucchi |
| Chris Clarke | Hallie Knudsen | Adrienne Raymond | Penelope Weiss |
| Marge Congdon | Aaron Korzun | Ed Raymond | Ali Wilson |
| Marilyn Dalick | Art Krueger | Russell Reay | Ruth Winkler |
| Pam Darrow | Megan LaChance | Helen Richards-Peelle | Sharon Winnicki |
| Sally Deinzer | Elijah LaChance | Gary Salmon | Francis Wyatt |
| Linda & Phillippe Ducrot | Annie Lees | Vaidehi Sangrod | Mark Youngstrom |
| Louise Duda | Colleen Levins | Erin Sarkozy | |



Artwork by Grace Brigham



NEWS FROM PIERCE'S STORE 802-492-3326

Bob Knudsen, Manager

We are delighted to wish everybody a delightful holiday season and a great start to the New Year!

WHAT'S NEW IN THE STORE

In order to better serve customers during the cold winter months, we have put some tables back in the store to allow for in house snacks and lunches, so come grab a soup or sandwich, pick up a guitar, and hang around for a bit! You may have also noticed that we have done some rearranging to make better space for our consignment goods from local artists as well as better space for our groceries. We will also have a Christmas Tree in the front window with some special treats available for kids as well as the young at heart, so be sure to check in for a nice surprise!



Danica candles have returned in force, with a dazzling array of taper candles, beeswax, and votives – including some scented options for extra festive fun! The greeting cards have been rotated to the winter ones to send to your friends and family as well. And if you like granola, we are going to be running a special on all of our Vermont based Back Roads flavors to make room for some new items.

MEATS, PIZZA, ICE CREAM AND MORE TREATS

Our meat selection is continuing to grow, with Robie Farms supplying our chicken and pork, Stonewood Farms giving us some great sausage and ground white meats, and everybody's favorite local beef from Smith Maple Crest and Kelley Beef. If you are looking for larger quantities or different farms for chicken and turkey, we can also get Misty Knoll at a discount rate, and Robie has case sizes for most of their poultry and pork at a pretty healthy discount. Not a meat eater? No worries, we can get you the Earth Sky Time Goldburger patties courtesy of our friends at Wilcox.

Speaking of Wilcox, our ice cream is still the hottest cold treat in town! Biggy Iggy has finally returned to our freezer, and we

have a ton of options for ice cream from Wilcox and Strafford, and our friends at Larson Farms have a fantastic assortment of gelato for us in addition to their A2 milks and yogurts. Goodman's Pizza will also be partnering with us more closely to make sure we can keep their extremely popular pizzas in stock without having to worry about delivery drivers.

Have you checked our coffee selection lately? If not, please stop by! We have five pound bags of decaf on special if you don't want the jitters, as well as smaller packages of the high test dark, extra dark, and medium roasts in addition to Speeder and Earl's special blends. Fun fact: The fresh brewed coffee we use in the store for those cups you buy every day is made of a blend of some of these options, ground right here in the store. And don't forget, we can grind your coffee for you as well with no extra charge!

STAFFING AND VOLUNTEER UPDATES

For the first time in a long while, we have a fully staffed store! We are not resting on our laurels, however, and if you are interested in volunteering or working at the store, please let us know – we can always make room for a willing and available individual who wants to help out.

HOLIDAY HOURS

In order to allow our staff and volunteers the opportunity to spend time with their friends and families, we will be:

- Closed Thanksgiving Day**
- Closed Christmas Day**
- Closed New Year's Day**

We will close New Year's Day for an inventory count, so be sure to come up the day before each holiday to stock up on your needs!

As always, thanks for supporting local co-ops and businesses and we hope to see you in the store! ~Bob



Pre-holiday Wine Tasting December 9

Stop by Pierce's Store on Friday December 9th from 4pm to 6pm to sample some sparkling wines for spreading holiday cheer. Come tickle your nose as well as your palate. We'll be focusing on fun wines that are on sale so we can pass on the savings.

~Sandy Bragg



THE NEW LEARNING PROJECT CHOOSING TO EXPERIENCE OUR POTENTIAL

- MUSIC LESSONS -- Guitar, Piano, and more**
- RED CROSS COURSES -- First Aid, CPR, Lifeguarding**
- SWIMMING INSTRUCTION**
(More services at website)

STUDIO IN CUTTINGSVILLE VT
www.TheNewLearningProject.com
TheNewLearningProject@gmail.com
802.492.3208

Marcos Levy
Instructor with over 30 years
of Experience

The Times of Shrewsbury
P. O. Box 373
Cuttingsville, VT 05738

PRESORT STD
US POSTAGE PAID
SHREWSBURY, VT
05738
PERMIT NO. 2

To: Postal Patron

Donors are recognized for the remainder of the calendar year in which their donation is received. The *Times* is mailed to all residents of Shrewsbury and is also available online. The cost of printing and mailing is made possible through advertising and your donations which are very much appreciated. Donations can be made to: *Times of Shrewsbury*, P. O. Box 373, Cuttingsville, VT 05738. **THANK YOU!**

Larry & Lauren Abelman
Craig & Peggy Angstadt
Gary & Minnie Arthur
Roy Arthur
Steve Banik & Virginia Gundersen
Randell & Diane Barclay
Michael & Elizabeth Bedesem
John & Mary Beerworth
Nancy Bell
John & Linda Berryhill
Ludy Biddle
Rich & Cynthia Biziak
Dave & Debbie Blecich
Sandy & Kristi Bragg
Daniel & Virginia Buckley
Bruce & Liz Bullock
Jim Bulno
Carol Calotta
John & Linda Calotta
Herb Carrara
Jamie & Catherine Carrara
Larry & Lila Carrara
Michael & Laura Cashel
Connie & John Cioffi
Christina Clarke
Peter & Theresa Clarke
Scott & Lindsay Courcelle
Douglas Crowe & Amanda Ciaccio
Marilyn Dalick
Sally Deinzer
Rosemarie Pluss Dobler
Linda & Phillippe Ducrot
Stan & Louise Duda
Wayne & Lizzie Emmons
Nils & Pamela Ericksen
Kathi & Timothy Faulkner
Gene & Kathy Felder
Chuck & Luisa Finberg
Liz Flint
David & Jo Fretz
Scott Garren & Heather Shay

Jonathan Gibson & Eliza Mabry
Richard Gile & Sue Brown
Mark & Carol Goodwin
Peter & Pam Grace
Barry & Barbara Griffith
William & Patricia Gross
John & Betty Heitzke
Betsy Hinckley
Bob & Connie Hoelscher
Carmine Iannace & Rita Gyls
Martha Herbert Izzi
Jeffrey & Diane Jakobsen
Jack & Betsy Jesser
Ellen Jorgensen
James & Laura Keller
Robert & Judith Landon
Michael & Angie Lauri
Marcos & Turiya Levy
Mark & Connie Mackintosh
Ed & Clare Mangine
Gerry & Chryl Martin
Stephen & Patricia Martyn
Taffy Maynard
Lynn McDermott
Michael & Jennifer McDermott
Mill River Unified Union School
District
Jeff & Pam Monder
Moody Family
Jack & Joan Mulqueen
Raymond & Cheryl Noble
Trish Norton
Fran Patten
Jack & Sharon Perry
Roxanne Ramah
Ed & Adrienne Raymond
Russ & Donna Reay

Reinbow Riding Center
Helen & Andy Richards-Peelle
Ridlon Family
Nathan Rudisill & Carrie Clancy
Ed & Judy Ryan
Thomas & Donna Ryan
Gary & Margery Salmon
Susan Savage & Irvin Gordon
Wendy Savery
Brian & Patricia Sedaille
Paul Sgalia & Victoria Arthur
Alan & Linda Shelvey
Shrewsbury
Community Church
Conservation Commission
Cooperative at Pierce's Store
Historical Society
Library
Outing Club
Volunteer Fire Department
Sirjane Family
Donna Smith
Bob & Sally Snarski
Spring Lake Ranch
John C. Stewart II
Tim and Nancy Stout
Dirk & Judith Thomas
Paul & Sarah Titterton
Cady & Beau Tudzarov
Liesbeth van der Heijden
Ann Vanneman
Lana Vanucchi
Howard & Deborah Weaver
Michael & Phyllis Wells
Nancy & James West
Christel Wiedmann
Lee Wilson
William and Peggy Wilson
The Winkler Family
Mark & Connie Youngstrom

